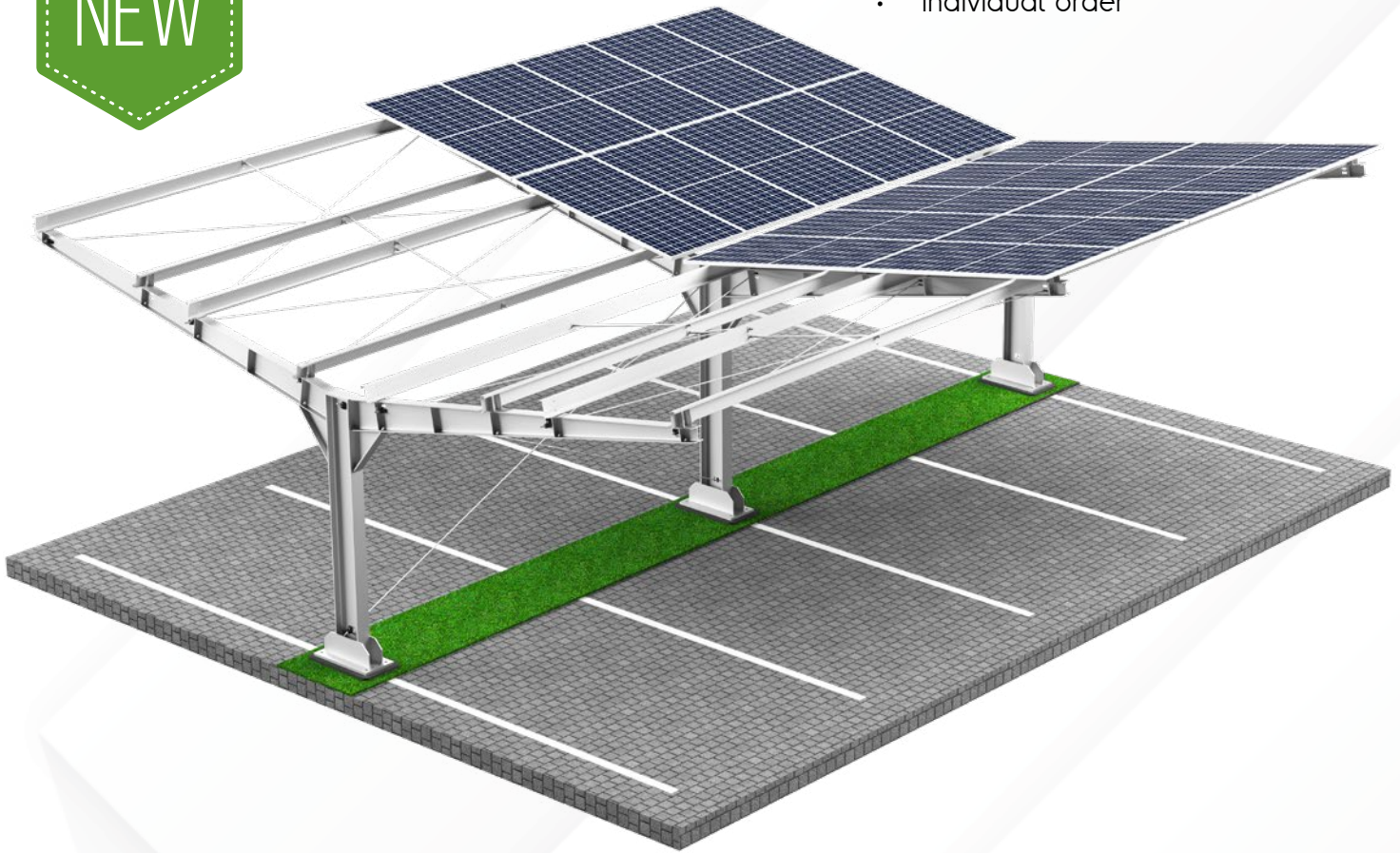


INDUSTRIAL SHED - T

NEW



- inclination angle 10°/15°
- trapezoidal sheet metal (option)
- any number of stands
- individual order

Photovoltaic sheds

- most photovoltaic modules can be installed
- parking spaces can be used for electricity generation
- the shed can be extended by additional parking stands
- the shed structure and appearance can be adjusted to individual customer requirements
- protection against weather conditions
- bumper for individual order [option]

Properties

- Corrosion protection galvanizing and/or **Magnelis®**
- **1-year warranty** on Z275 coated elements
- **2-year warranty** on hot-dip galvanized elements
- **25-year warranty** on coating **Magnelis®**
- **25-year warranty** on structure
- Standard spacing of supports up to 5.6 meters

We develop individual customer concepts.

Standards

EN 1090-2, EN 1990:2004,
EN 1991-1-3, EN 1991-1-4,
EN 1993-1-1:2006P,
EN 1993-1-3:2008P,
EN 1993-1-5:2008P,

